

定位销 DCP40

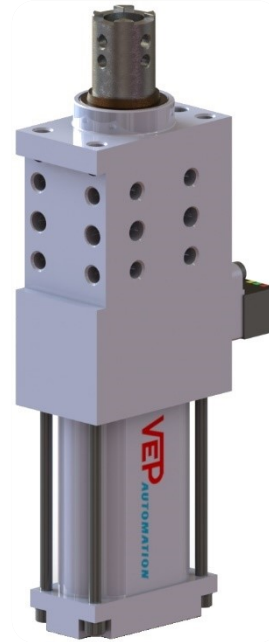
Locator device DCP40

主要特点:

- 紧凑型设计
- 定位精度高
- 铝制壳体
- 4 个安装面 (前后左右)
- 5 种类型氮化活塞杆
- 铝制导套
- 活塞杆行程: 20, 40, 60 mm
- 气缸缸径: 40 mm
- 2 个 G1/8"气源接口
- P+F 接近开关 (M12x1 接口)
- 带手动机构可选

Main characteristics:

- Compact design
- High accuracy of positioning
- Aluminum body
- 4 mounting areas (up, front and sides);
- 5 types nitrided rods
- Bronze guiding bushes
- Rod stroke: 20, 40, 60 mm
- Pneumatic cylinder bore: 40 mm
- 2 feeding ports G1/8"
- Inductive proximity switch P+F (connection M12x1)
- Hand lever



[PDF](#)



[3D Step](#)



[Index](#)

索引.
Index.

页码 Page	描述 Description	
1	主要特点 Main characteristics	
2	订货举例 Ordering example	
3	尺寸页码 Dimensional page	DCP40...
4		DCP40...M...
5		DCM40K...
6-7	活塞杆类型 / Rods type	
7	接近开关图表 Diagram for inductive proximity switch	
8	气路图 / Pneumatic plan 图表 / Diagrams 特性 / Properties	
8	备件 / Spare parts	
9	备注 / Notes	



订货举例.

Ordering example.

DCP40 - BN - 40 - I - 03 - LA

型号和气缸缸径:
Type and cylinder bore:

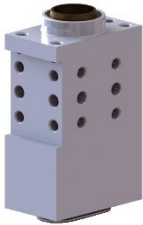
DCP40
定位单元
气缸缸径 40 mm
locator with pneumatic cylinder bore 40 mm

DCP40K
定位单元
气缸缸径 40 mm
轴向扭矩加强
locator with pneumatic cylinder bore 40 mm reinforced for axial torque

DCP40M
定位单元
气缸缸径 40 mm
带手动机构
locator with pneumatic cylinder bore 40 mm and hand lever

DCP40KM
定位单元
气缸缸径 40 mm
轴向扭矩加强
带手动机构
locator with pneumatic cylinder bore 40 mm reinforced for axial torque and hand lever


DCM40K
不可逆的手动定位销
(无气缸缸体)
Irreversible manual locator (without pneumatic cylinder)



接近开关:
Proximity switch:

X: 无接近开关
without proximity switch

I: P+F 电感式接近开关
inductive proximity switch P+F



行程:
Stroke:

DCM40K	---	40	60
DCP40	20	40	60
DCP40K	20	40	60
DCP40M	20	40	60
DCP40KM	20	40	60

活塞杆类型 (参见第 6-7 页):
Rod type (see pag. 06-07):


AN: 氮化活塞杆 孔径 Ø10H7 十字头杆端
nitrided rod with Ø10H7 hole and cross-profiled end

BN: 氮化活塞杆 孔径 Ø16H7 十字头杆端
nitrided rod with Ø16H7 hole and cross-profiled end

CN: 氮化活塞杆 孔径 Ø16H7 扁平头杆端
nitrided rod with Ø16H7 hole and flat end

DN: 氮化活塞杆 孔径 Ø10H7 扁平头杆端
nitrided rod with Ø10H7 hole and flat end

SPN: 扁平氮化活塞杆
nitrided plate rod



手柄位置:
(只适用于 DCM40K, DCP40M e DCP40KM)
Hand lever position:
(specify only for DCM40K, DCP40M and DCP40KM)

LA: 手柄在前面
back lever

LB: 手柄在后面
front lever

SP 活塞杆位置 (参见第 6 页):
SP rod position (see page 06):

03	06	09	12
-----------	-----------	-----------	-----------

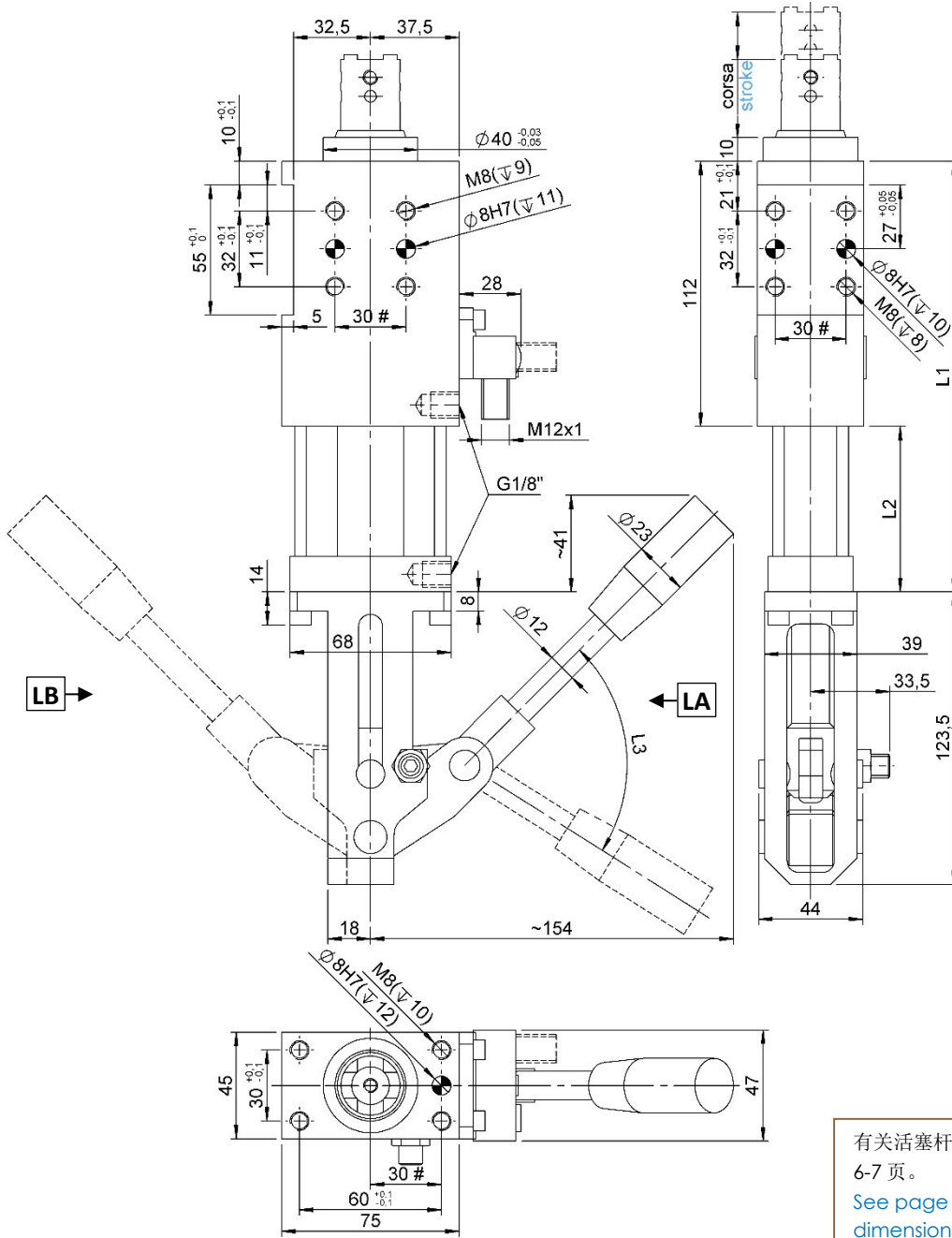
备注: 仅针对带 **SPN 型** 活塞杆的定位销。
NOTE: specify only for locators with SPN rod



DCP40...M...

定位销, D. 40, 带手动机构, 行程 20/40/60 mm

Locator device, D. 40, hand lever, stroke 20/40/60 mm



#公差: 定位销孔 ±0.02, 螺纹孔 ±0.1

#Tolerances: dowel holes ±0.02, screw holes ±0.1

类型 Type	气缸缸径 Cylinder bore	活塞杆行程 Rod stroke	L1	L2	L3	重量 Weight	耗气量 (5 bar) Air consumption (5 bar)	
	[mm]	[mm]	[mm]	[mm]	[°]	[Kg]	[l]	
DCP40M...-20I-L...	40	20	182	70	26	~ 2,9	~ 0,25	
DCP40KM...-20I-L...						~ 3,0		
DCP40M...-40I-L...		40	40	202	90	47	~ 3,0	~ 0,5
DCP40KM...-40I-L...							~ 3,1	
DCP40M...-60I-L...		60	60	222	110	78	~ 3,1	~ 0,75
DCP40KM...-60I-L...							~ 3,2	

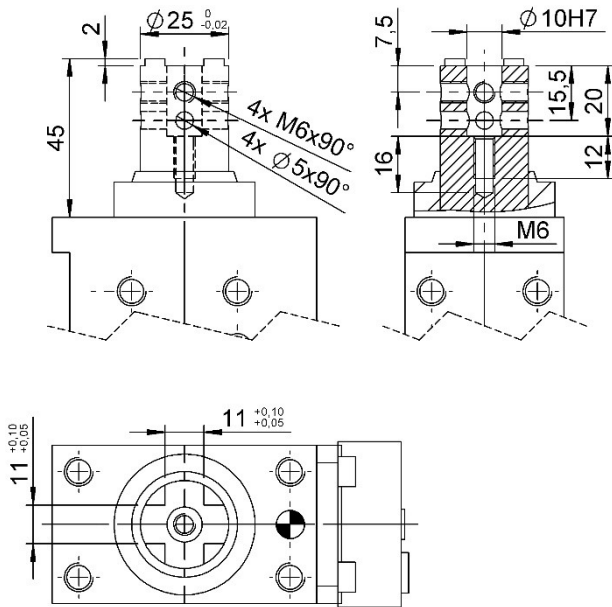


活塞杆类型

Types of rods

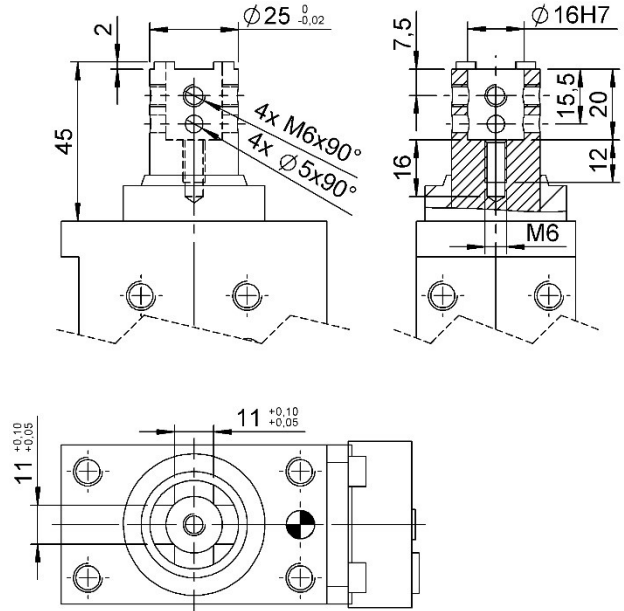
杠型 **AN**

Type **AN**



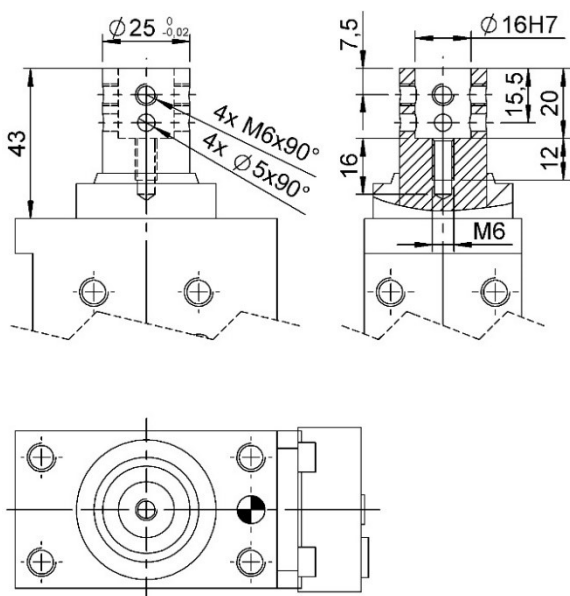
杠型 **BN**

Type **BN**



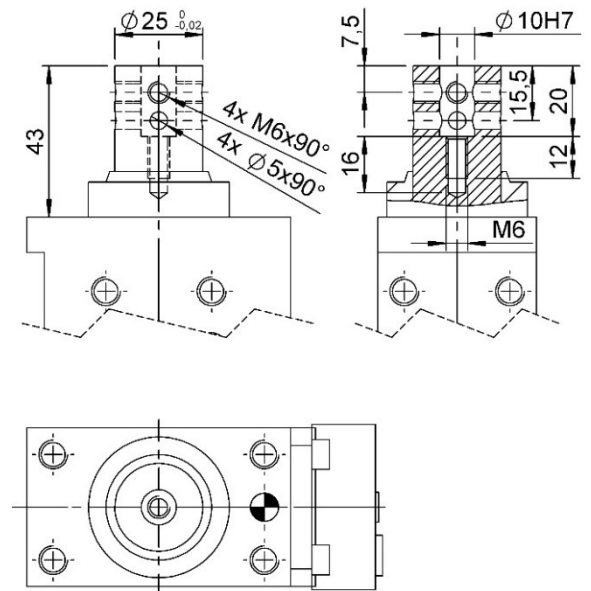
杠型 **CN**

Type **CN**



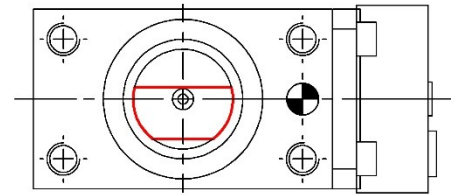
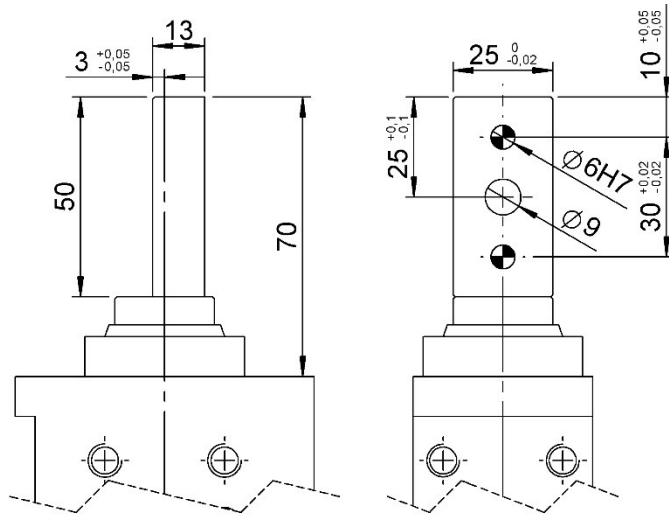
杠型 **DN**

Type **DN**



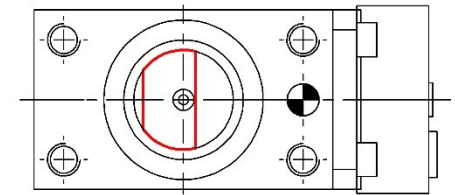


杠型 SPN
Type SPN



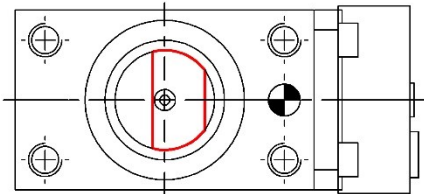
活塞缸方向 06

Position 06



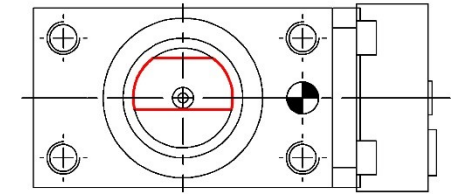
活塞缸方向 09

Position 09



活塞杆方向 03

Position 03



活塞杆方向 12

Position 12

电感式接近开关原理图 (06706/行程/C)

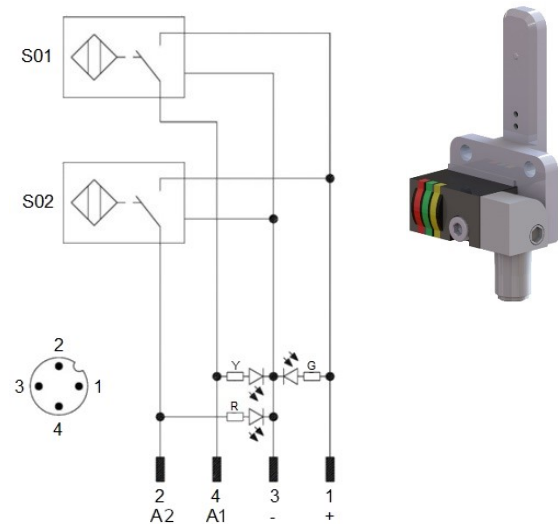
Diagram for Inductive proximity switch (06706/stroke/C)

技术参数(P+F):

- 输出类型: PNP;
- 输入电压: 10-30 VDC;
- 最大换向电源: 200 mA;
- 消耗电流: < 25 mA;
- 电压差: < 2 V
- 温度范围: -25° / 70° C.

Technical data (P+F):

- Output type: PNP;
- Feeding voltage: 10-30 VDC;
- Max. commutating current: 200 mA;
- Power supply: < 25 mA;
- Voltage drop: < 2 V;
- Temperature range: -25° / 70° C.



S01 = 打开信号
S01 = opening signal
S02 = 夹紧信号
S02 = closing signal

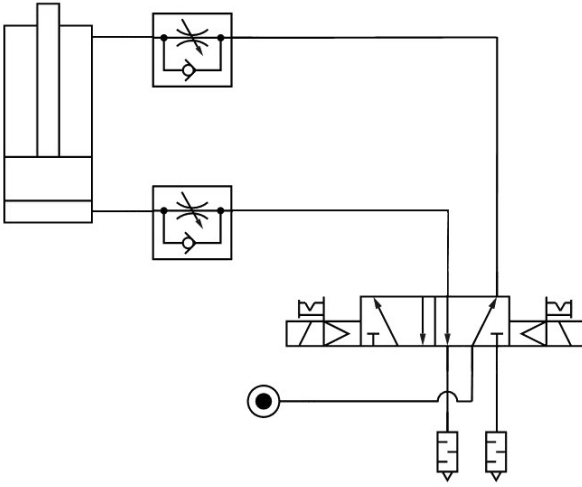
Y = 黄色 LED / yellow LED
G = 绿色 LED / green LED
R = 红色 LED / red LED

1 = 棕色线 / brown wire
2 = 黑色线 / black wire
3 = 蓝色线 / blue wire
4 = 白色线 / white wire



气路图

Pneumatic plant



类型 Type	耗气量 Air consumption (5 bar)	耗气量 Air consumption (6 bar)	工作气压 Working pressure
	[l]	[l]	[bar]
DCP40...-20l	~ 0,3	~ 0,35	2 – 8
DCP40K...-20l			
DCP40...-40l	~ 0,55	~ 0,65	
DCP40K...-40l			
DCP40...-60l	~ 0,8	~ 1,0	
DCP40K...-60l			
DCP40M...-20lL...	~ 0,25	~ 0,3	
DCP40KM...-20lL...			
DCP40M...-40lL...	~ 0,5	~ 0,6	
DCP40KM...-40lL...			
DCP40M...-60lL...	~ 0,75	~ 0,9	
DCP40KM...-60lL...			

特性.

Properties.

类型 Type	推压力 Pressing force (5 bar)	牵引力 Tensile force (5 bar)	最大静态径向力 Static side force max.	最大扭矩力 Max. torque	最大角度扭力 Torsion angle max.
	[N]	[N]	[N]	[Nm]	[°]
DCP40...	600	500	150	4	± 0,1°
DC...40K...				6	± 0,1°

备件

Spare parts

配套元件 # Kit	图片 Picture	描述 Description	代号 Article
接近开关 Proximity switch		P+F电感式接近开关 Inductive proximity switch P+F	06706/行程/C 06706/stroke/C
密封套装 Seals kit		气动密封组件适用于 DCP40 / DCP40K Pneumatic cylinder seals for DCP40 / DCP40K	SCR-DCP40
		气动密封组件适用于 DCP40M / DCP40MK Pneumatic cylinder seals for DCP40M / DCP40KM	SCR-DCP40M



本目录取消并替换了以前的目录。我们保留在没有任何通知的情况下进行添加或更改的权利。目录中的产品为标准产品；对特殊应用的任何请求都由技术/商务部门进行评估。本目录文档均属 VEP Automation S.r.l. 所有。未经授权许可，禁止任何形式的复制。

This catalogue cancels and replaces the previous ones. We reserve the right to make additions or changes without any notice. The products in the catalogue are standard; any enquiry of special applications is evaluated by technical/sales department. The complete documentation belongs to VEP Automation S.r.l. and without permission any kind of reproduction is forbidden.

VEP Automation Headquarters

VEP Automation S.r.l

Via San Felice, 37
10092 Beinasco – Torino (Italy)
Tel. +39 011 3972572
Email: info@vepautomation.it
Web: www.vepautomation.it

VEP Automation Germany

VEP Automation GmbH

Fritz Liebsch Str. 29
D 26723 Emden (Germany)
Tel. +49 04921 450758
Email: info@vepautomation.de
Web: www.vepautomation.de

VEP Automation America

VEP Automation S.A. de C.V.

Av. Toluca 373 M Col. Olivar de los
Padres Del. Álvaro Obregón
01780 CDMX – (Ciudad de México)
Tel. +52 55 1718 0929
Email: info@vepautomation.mx
Web: www.vepautomation.mx

VEP Automation China

维亿普自动化（苏州）有限公司

地址: 中国江苏省苏州市吴中区木渎镇
木东路 317 号（联东 U 谷）1 幢 401 室
Room 401, Building No 1, No 317, mudong Road,
Wuzhong, mudu District, Suzhou City (China)
电话: +86 512 6729 2226
邮箱: info@vepautomation.cn
网址: www.vepautomation.cn